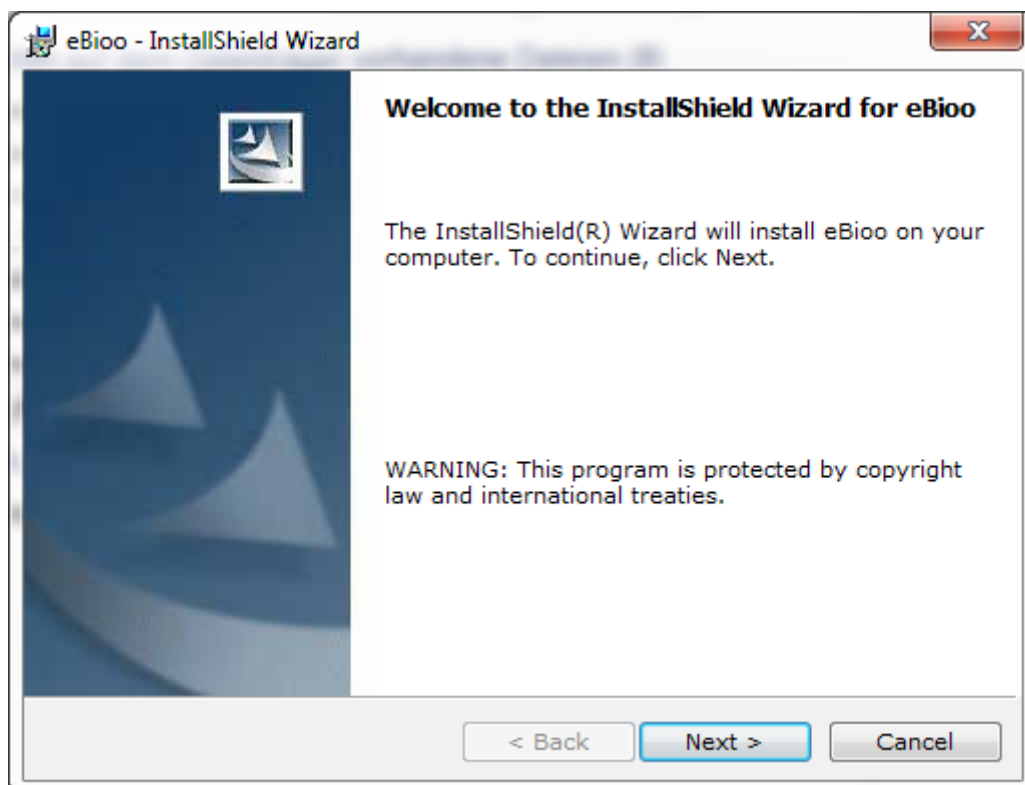


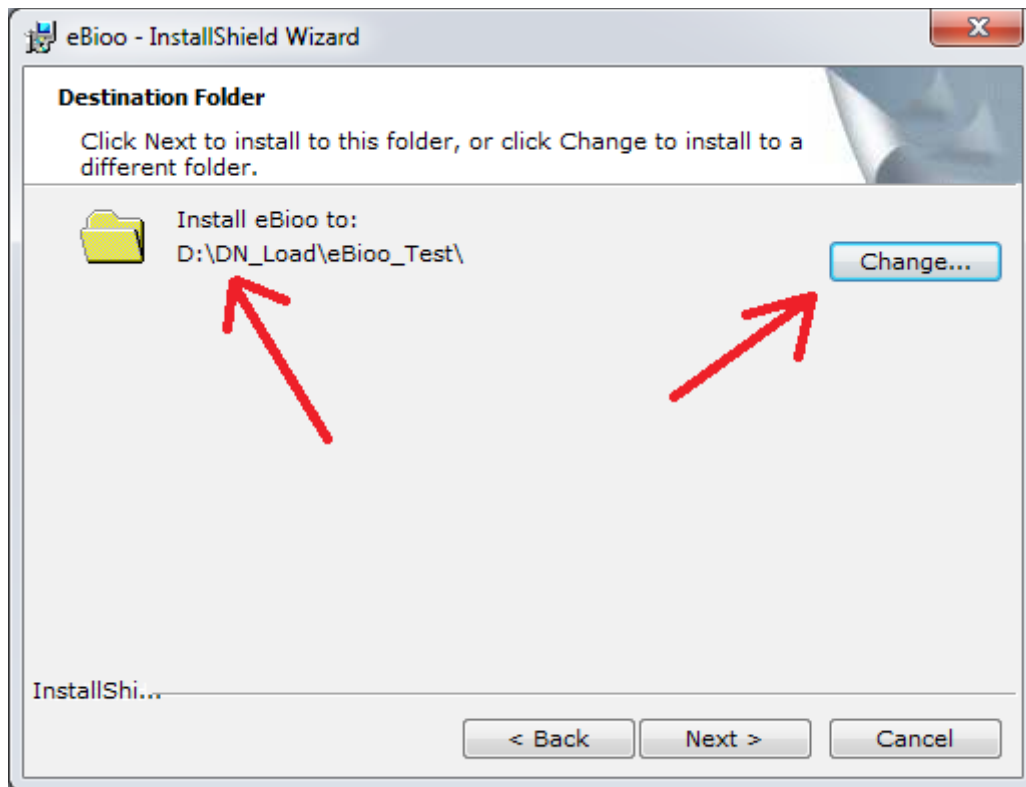
# 1. eBioo Installation

Name	Änderungsdatum
Software	28.02.2018 16:47
Documents	28.02.2018 16:53
NeurobitDrv.dll	13.11.2011 03:27
Readme	05.04.2014 15:17
bmrcm.dll	04.02.2016 21:22
Installation-Hints Neurobit	02.12.2016 10:57
eBioo_STARTER	03.03.2018 09:24
setup_eBioo_STARTER_1_85	03.03.2018 13:07
Readme	09.03.2018 12:01

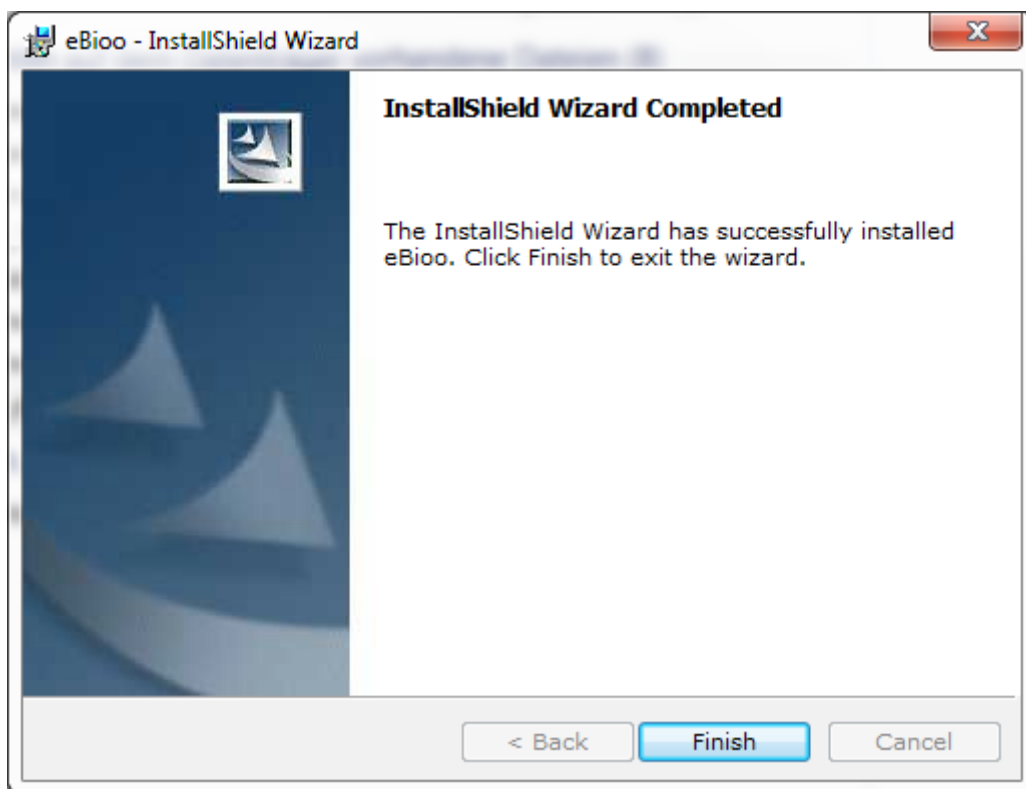
1.1 You can use setup\_eBioo\_\*.exe to install the software



## 1.2 The InstallShield will do the installation for You



## 1.3 You can select the requested target directory as you want



## 1.4 Finally press "Finish" to complete the installation

## 2. Establish Bluetooth Connection on Your Computer (if not exists)

### 2.1 Add new Serial Port Device in Windows System Services



See the Neurobit Manual how to add the Optima Device

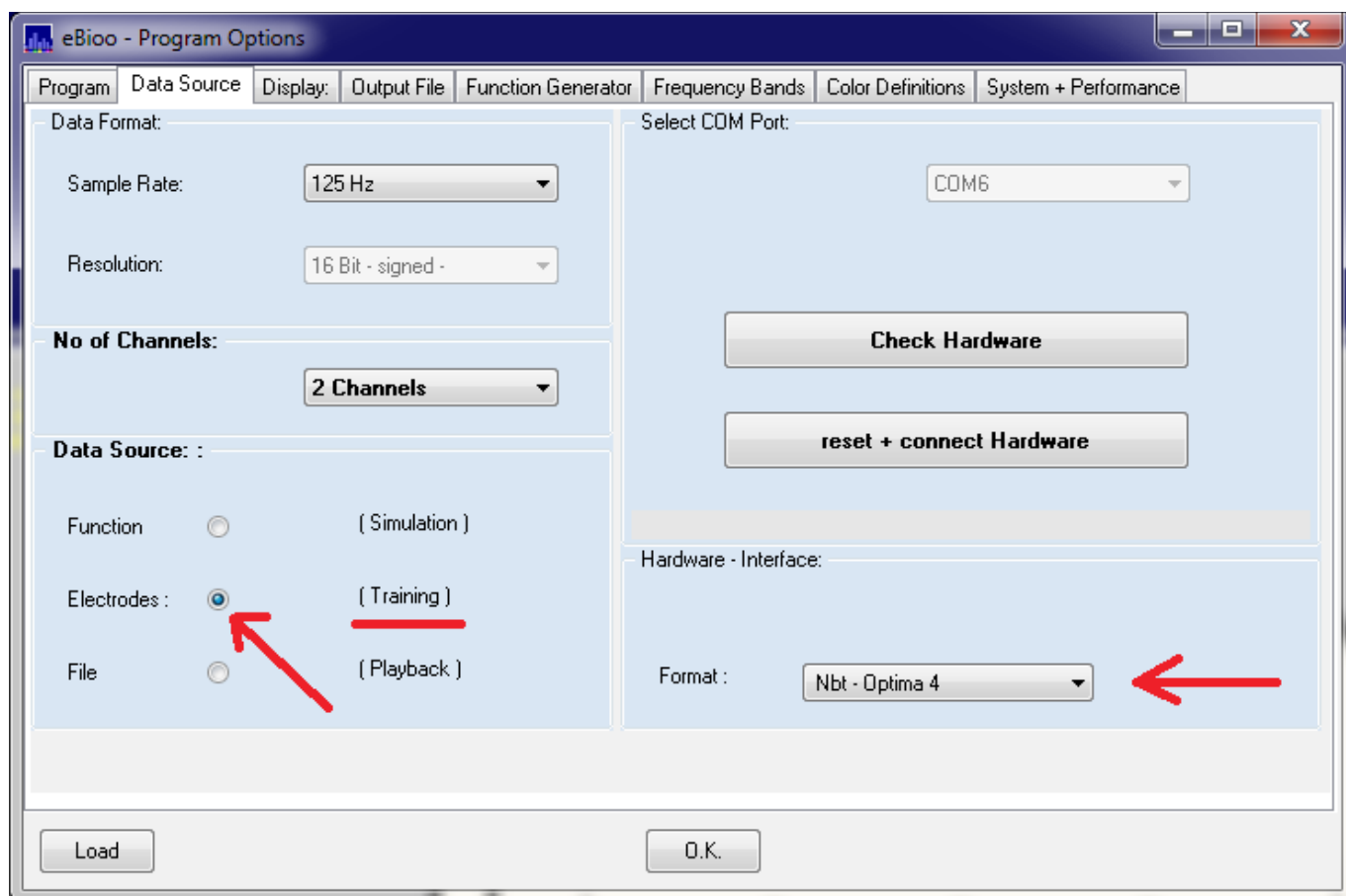
## 3. Start eBioo: (with Neurobit Device POWER OFF !)

The installation routine will have added a eBioo Shortcut on your Computer Destop. Start eBioo e.g. Using this Shortcut

### 3.1 Select your language and check the EULA, agree to start eBioo

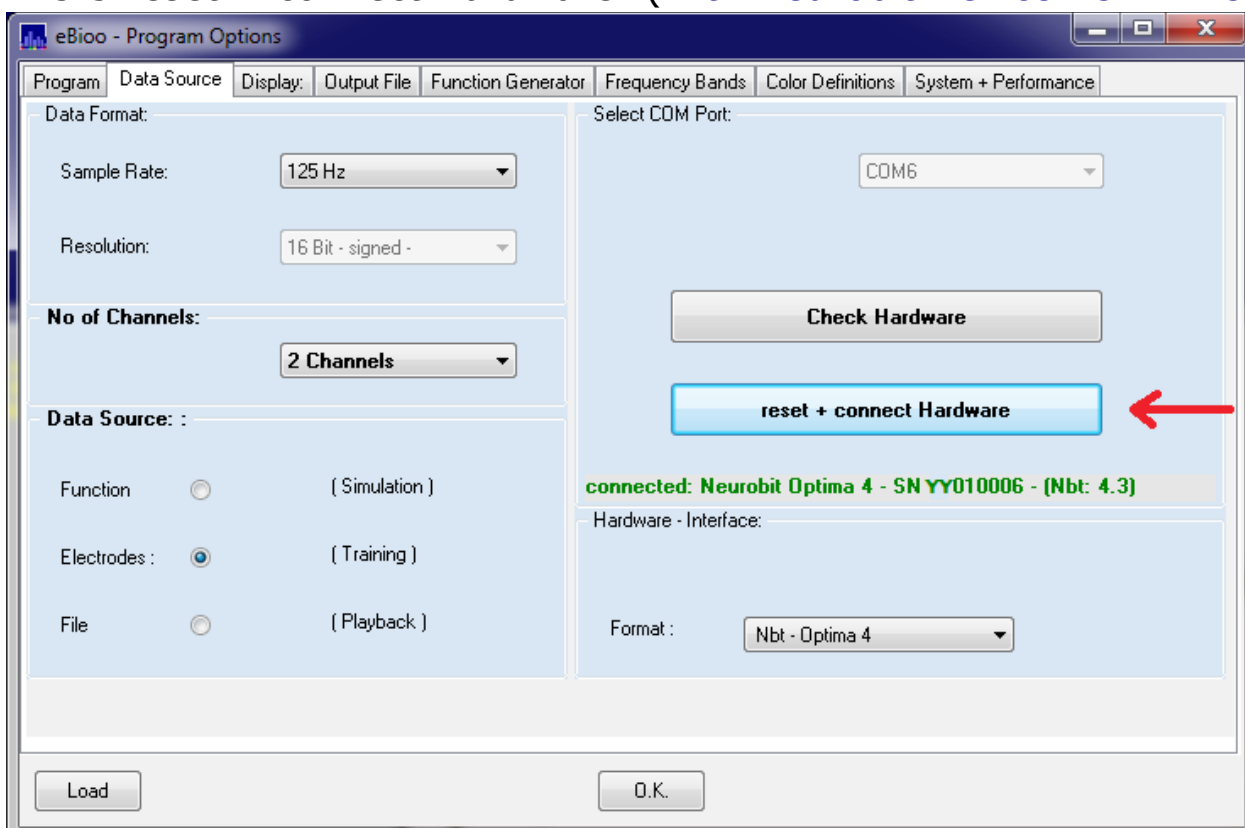


### 3.2 Connect to the Neurobit Device:

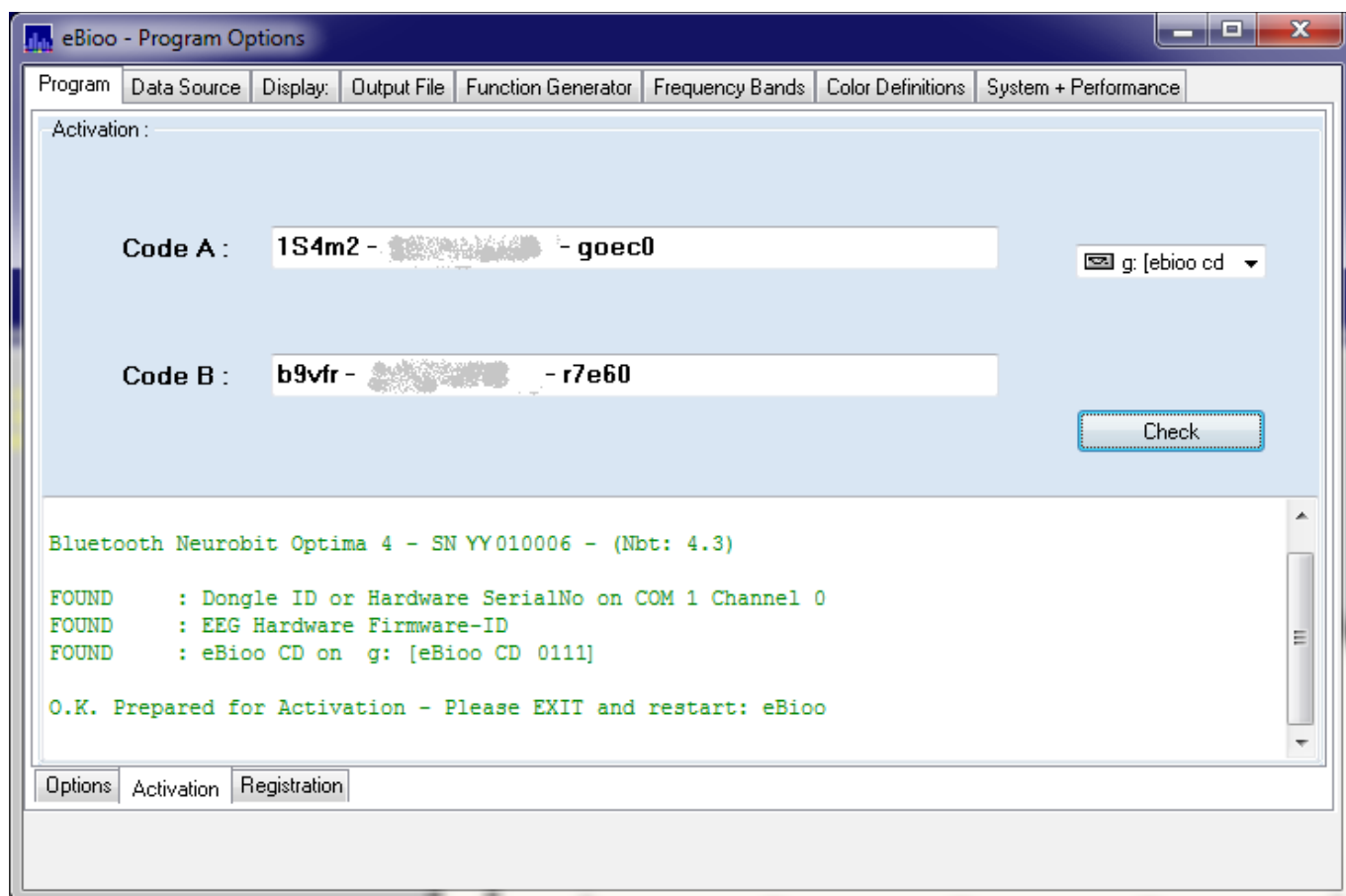


Select: Electrodes as Data Source + Nbt – Optima 4 Device

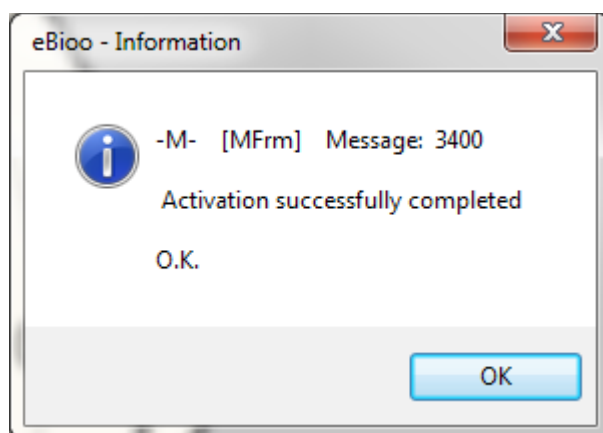
### 3.3 reset + connect Hardware: (with Neurobit Device POWER ON)



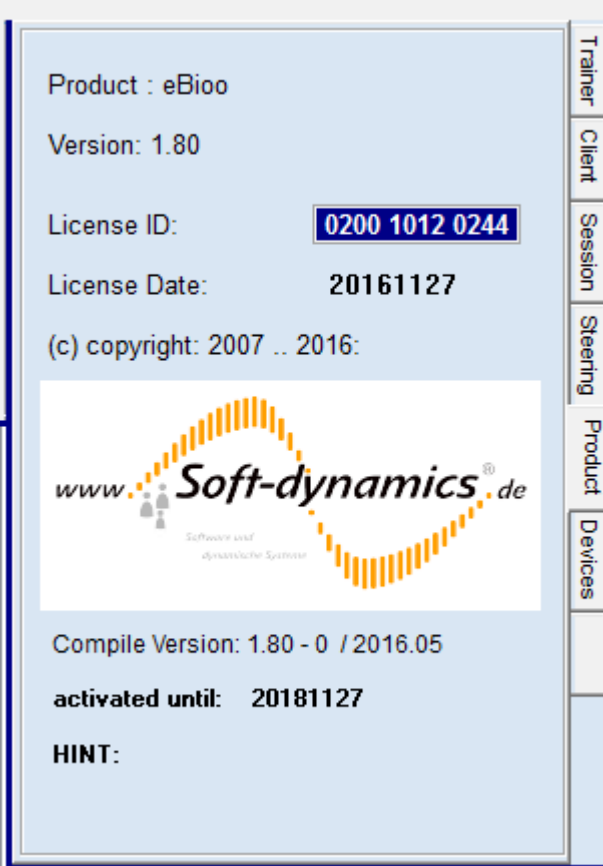
#### 4. Enter the Activation Code (eBioo CD must be present in a Drive!)



until the check was O.K. = the hints are in green color  
then close the eBioo software and restart eBioo again:



See Page: "Product", to lookup the activation result.



The screenshot shows a software license activation window. The main content area is light blue and contains the following text:

- Product : eBioo
- Version: 1.80
- License ID: **0200 1012 0244** (highlighted in a dark blue box)
- License Date: **20161127**
- (c) copyright: 2007 .. 2016:

Below the text is a logo for **Soft-dynamics® de**. The logo features a stylized orange wave graphic above the text. To the left of the wave is the text "www." and to the right is ".de". Below the main logo text, it says "Software und dynamische Systeme".

At the bottom of the window, the following information is displayed:

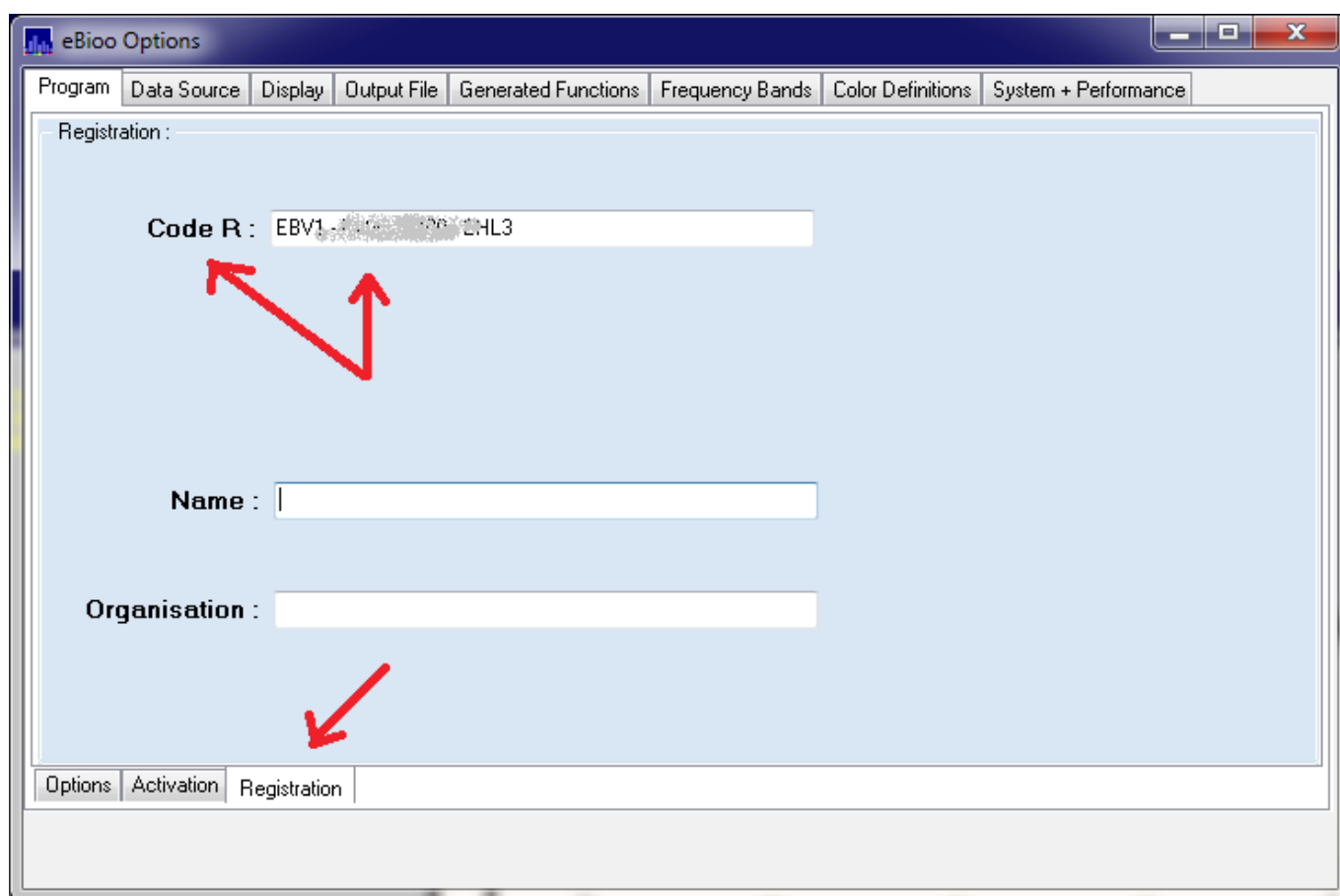
- Compile Version: 1.80 - 0 / 2016.05
- activated until: 20181127**
- HINT:**

On the right side of the window, there is a vertical navigation bar with buttons labeled: Trainer, Client, Session, Steering, Product, and Devices.

A temporary activation code is valid for the mentioned time period.

Contact Soft-dynamics to get permanent activation code for a particular computer if you are Home User. If You are professional Trainer, please purchase the eBioo Tuner or Trainer version.

For that lookup the **R-Code** (see: Options – Program - Registration) after Activation and pass the R-Code to Soft-dynamics, if requested. The R-Code is visible (only) in the session after the "successful completion" message. Note the R-Code and send it to Soft-dynamics, if a permanent activation is wanted for the STARTER version wanted.



Please be aware, that in the current eBioo version (1.85) an extension i.e. update activation on the same computer i.e. installation is only possible AFTER the existing active activation has expired (remaining days = 0).

So please wait executing an update activation until the current activation has expired.